

Desktop safes



PRINT



FEATURES

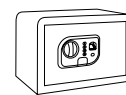
- Front/body thickness: 6mm / 1.5mm.
- Includes fixing screws.

TYPE OF LOCK

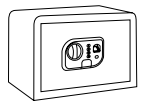
- Fingerprint reader or code.
- Fingerprint: stores up to 32 different fingerprints.
- Opening code: a freely selected user code (3-8 digits), with safety checks when changing.
- Lockout after three failed opening attempts.
- Emergency key.
- Battery: four 1.5V batteries.
- External power socket.
- System can be reset to factory settings if required.



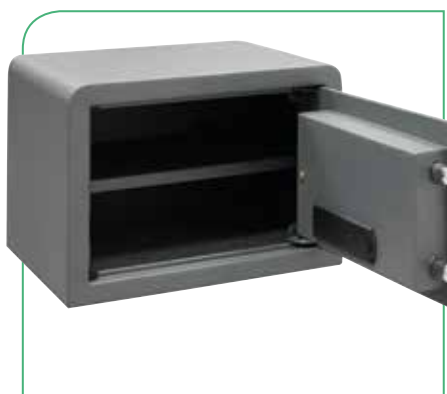
PRINT
Ref.140520



140520



140540



Ref.	Exterior measurements (H x W x D) mm	Interior measurements (H x W x D) mm	Kg	L	Shelf	Bolts No.	Bolts position	EAN13 code 8425181 *	Pack. measurement (H x W x D) mm
140520	250x350x250	245x345x190	9 kg.	16 L.	1	2 / ø20 mm		* 738276	270x370x285
140540	270x385x300	265x380x240	10 kg.	24 L.	1	2 / ø20 mm		* 741610	290x405x340