



MAILBOXES & SIGNAGE



GUN SAFES



CHILD SAFETY



RECYCLING & ORDER



NOVELTIES | 2018



www.arregui.biz

STYLES: AVANT-GARDE **AG**



SIZES: S (Capacity: DIN-A5) / M (Capacity: DIN-A4)

STEEL MAILBOXES



SIZE **S**

SMART GRAPHIC Pag. 2	TONDO S Pag. 4
	



SIZE **M**

PREMIUM GRAPHIC Pag. 3	TONDO M Pag. 5
	








SIGNAGE








LUXE GRAPHIC Pag. 6	SE-GRAPHIC Pag. 7
	

GUN SAFES

BRACO RANGE Pag. 8	WOOD Pag. 9
	

CHILD SAFETY

TV SAFE STRAPS Pag. 10	ADJUSTABLE WOODEN GATE Pag. 10	TRANSPARENT PROFILE Pag. 11	PROFILE ROLL Pag. 11	PROFILE + CORNER GUARDS Pag. 11	MULTI-PURPOSE PROFILE Pag. 11	VELCRO CORD FASTENER Pag. 12
						

MULTI-PURPOSE FLEXIBLE LOCK Pag. 12	WINDOW OPENING LIMITER Pag. 12	DOOR SLAM STOP Pag. 13	PUSHCHAIR SHOPPING BAG HOOK Pag. 13	PUSHCHAIR SECURITY WIRE Pag. 13	MULTI-PURPOSE FOLDABLE STOOL Pag. 14	TAP FAUCET Pag. 14
						

BATH TAB NON-SLIP MAT Pag. 14	KITCHEN OVEN SAFETY LOCK Pag. 15	BABY NIGHT LIGHT Pag. 15
		

RECYCLING AND ORDER

BINARY Pag. 16




SMART GRAPHIC



TECHNICAL SPECIFICATION

Mailbox capacity:	- ■ ■ ■ +
Anti-corrosion resistance:	■ ■ ■ ■
Tightness:	-
EAN13 code	8425181 *
EXTRA	Double function: mailbox + mail collector. Ideal for use in confined spaces.

MEASUREMENTS (mm)

SLOT: 175x20 mm	
MAIL COLLECTOR SLOT: 178x20 mm	

PACKAGING (mm)

PACKAGING: 320x230x480 mm	
-------------------------------------	--

STEEL



SMART GRAPHIC
E5721-SAL
* 735510



SMART GRAPHIC
E5724-SAL
* 735527



SMART GRAPHIC
E5721-STR
* 735534



SMART GRAPHIC
E5724-STR
* 735541



Rear view (mod. E5724-SAL).

PREMIUM GRAPHIC



TECHNICAL SPECIFICATION

Mailbox capacity:	- ■■■ +
Anti-corrosion resistance:	■ ■ ■
Tightness:	✓
EAN13 code	8425181 *
EXTRA	<p>Tested to European Standard EN-13724.</p> <p>Attractive stamped finishes.</p>

MEASUREMENTS (mm)

<p>SLOT: 250x34 mm</p>	

PACKAGING (mm)

<p>PACKAGING: 405x275x120 mm</p>	
---	--

STEEL

AG

M



PREMIUM GRAPHIC
E5601-BIR
* 735497



PREMIUM GRAPHIC
E5601-STR
* 735503



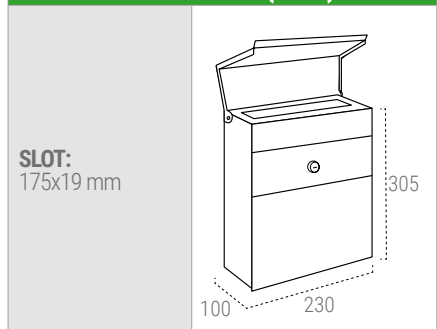
TONDO S



TECHNICAL SPECIFICATION

Mailbox capacity:	- ■■■ +
Anti-corrosion resistance:	■■■■
Tightness:	✓
EAN13 code	8425181 *
EXTRA	<p>The lock remains hidden and protected under the visor.</p> <p>The mailbox includes an adhesive vinyl of signage and a strip of numbers from 0 to 9, to be able to personalize the mailbox and signal it with the house number.</p>

MEASUREMENTS (mm)



Available a pack with adhesive numbers strips, sold independently of the mailbox.

STEEL

MAILBOXES WITH HOME SIGNAGE



TONDO S
E6721-BLU
White mailbox with blue knob and blue vinyl
* 735756



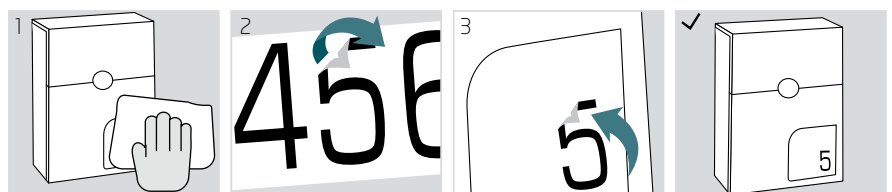
TONDO S
E6721-SIL
White mailbox with silver knob and silver vinyl
* 736210



TONDO S
E6724-IRI
Black mailbox with iridium knob and iridium vinyl
* 736227



TONDO S
E6725-SIL
Iridium mailbox with silver knob and silver vinyl
* 736234



Installation instructions

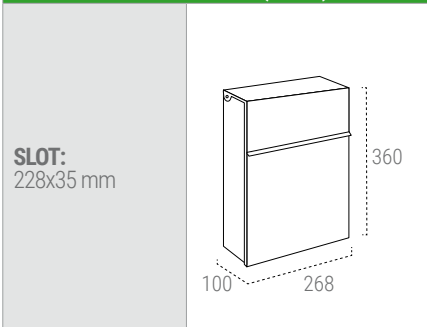
TONDO M



TECHNICAL SPECIFICATION

Mailbox capacity:	- ■■■ +
Anti-corrosion resistance:	■ ■ ■ ■
Tightness:	✓
EAN13 code	8425181 *
EXTRA	<p>Tested to European Standard EN-13724.</p> <p>The lock remains hidden and protected under the visor.</p> <p>The mailbox includes an adhesive vinyl of signage and a strip of numbers from 0 to 9, to be able to personalize the mailbox and signal it with the house number.</p>

MEASUREMENTS (mm)



Available a pack with adhesive numbers strips, sold independently of the mailbox.

STEEL



MAILBOXES WITH HOME SIGNAGE



TONDO M
E6731-BLU
White mailbox with blue knob and blue vinyl
* 736241



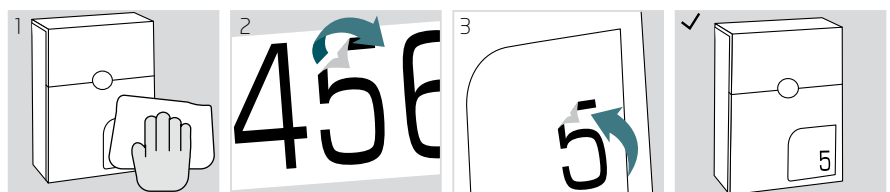
TONDO M
E6731-SIL
White mailbox with silver knob and silver vinyl
* 735800



TONDO M
E6734-IRI
Black mailbox with iridium knob and iridium vinyl
* 735824



TONDO M
E6735-SIL
Iridium mailbox with silver knob and silver vinyl
* 735831



Installation instructions

LUXE GRAPHIC

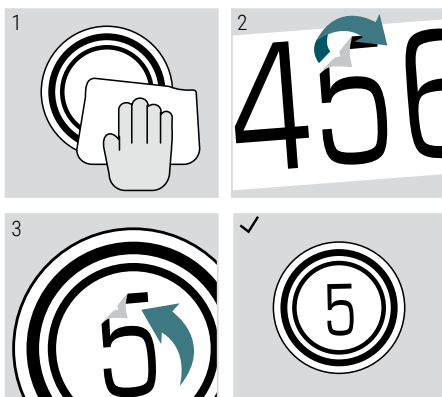
TECHNICAL SPECIFICATION

Material:	Aluminium 5 mm thick.
Fixing:	Fixing is made with adhesive, like silicone or similar. Fixing material is not provided with the signage.
Sizes:	Ø 120 mm.
Available colours:	White, black, green and red.
EAN13 code	8425181 *
EXTRA	<p>Decoration printed by serigraphy.</p> <p>Numbers in black or white adhesive vinyl.</p> <p>Adhesive numbers strip from 0 to 9 are included.</p>



Available a pack with adhesive numbers strips, sold independently of the signage plate.

**INCLUDES ADHESIVE VINYL
FOR NUMBERING**



SE-GRAPHIC

TECHNICAL SPECIFICATION

Material:	Galvanized steel 15 mm thick.
Fixing:	Fixation consists of two pieces, a base that is fixed to the wall by screws and a lid that is connected to the base by pressure. The screws are hidden by the lid. Fixing material is not provided with the signage.
Sizes:	120x120 mm.
Available colours:	White, black, green and red.
EAN13 code	8425181 *
EXTRA	<p>Decoration printed by serigraphy.</p> <p>Numbers in black or white adhesive vinyl.</p> <p>Adhesive numbers strip from 0 to 9 are included.</p>

INCLUDES ADHESIVE VINYL FOR NUMBERING



SE502GR-01
WHITE
* 736258



SE502GR-04
BLACK
* 736272



SE502GR-06
RED
* 736289



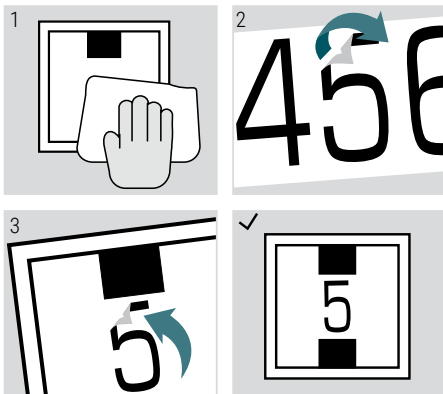
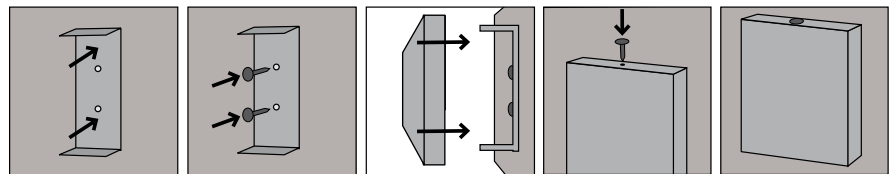
SE502GR-03
GREEN
* 736265



SE811
Colour: WHITE

SE814
Colour: BLACK

Available a pack with adhesive numbers strips, sold independently of the signage plate.



FRONTAL THICKNESS

2 mm.

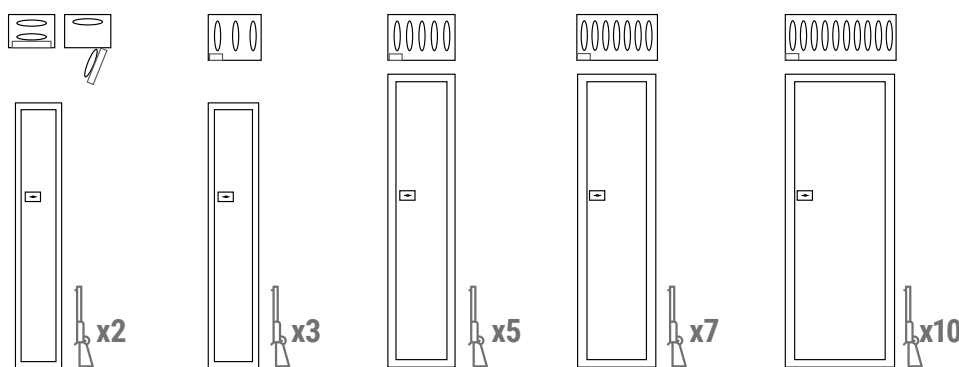
BRACO RANGE



TECHNICAL SPECIFICATION

Type of lock	6 asymmetric double bitted, with double blade key
EAN13 code	8425181 *
EXTRA	
<ul style="list-style-type: none"> Shelves for weapons made of rubber. Drawer with key (ref. ARM050335, ARM070335, ARM100335) 	

GUN SAFE
Ref. ARM050335



Nº GUNS	2	3	5	7	10
Reference	ARM020325	ARM030325	ARM050335	ARM070335	ARM100335
Opening	Key	Key	Key	Key	Key
Exterior measurements (HxWxD) mm.	1.255x205x150	1.255x245x205	1.380x315x205	1.380x370x205	1.380x540x205
Interior measurements (HxWxD) mm.	1.250x200x145	1.250x240x175	1.190x310x165	1.190x360x165	1.190x530x165
Weight	15,7 kg.	20,2 kg.	31,2 kg.	34,2 kg.	37,5 kg.
Volume	30 L.	52,5 L.	65 L.	75,6 L.	105 L.
Thickness (front / casing) mm.	2 / 2	2 / 2	2 / 2	2 / 2	2 / 2
Drawer	x	x	✓	✓	✓
Bolts/diameter (mm.)	3/ø10	2/ø18	2/ø18	2/ø18	2/ø18
Bolts position					
EAN13 code	* 735237	* 735244	* 735251	* 735268	* 735398
Packaging measurement (HxWxD) mm.	1300x210x165	1300x250x220	1425x320x220	1425x375x220	1425x545x220

WOOD

FRONTAL THICKNESS

2
mm.



TECHNICAL SPECIFICATION

Type of lock	6 asymmetric double bitted with double blade key.
Materials	Wooden finish steel.
EAN13 code	8425181 *
EXTRA	
<ul style="list-style-type: none"> • Shelf for 5 weapons made of rubber. • Drawer with key. 	



N° GUNS	5
Reference	ARM058335
Opening	Key
Exterior measurements (HxWxD)	1380x315x205 mm.
Interior measurements (HxWxD)	1.200x310x165 mm.
Weight	31,2 kg.
Volume	65 L.
Thickness (front / casing)	2 mm.
Drawer	✓
Bolts/diameter	2/ø18 mm.
Bolts position	
EAN13 code	* 735435
Packaging measurement (HxWxD)	1.425x320x220 mm.



Shelves for weapons made of rubber.



Internal drawer with key.

TV SAFE STRAPS

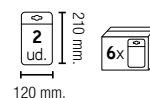
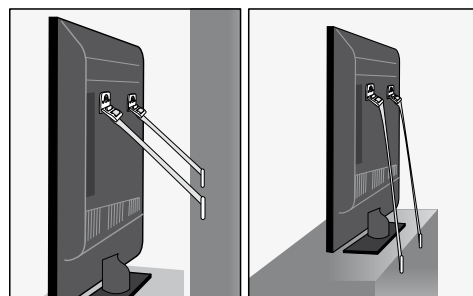
- They stop your TV from tipping over.
- They allow you to anchor your TV onto the wall or a table.
- Adjustable straps.
- Assembly elements included.
- Assembly instructions included.

EAN13 code

8425181 *



REF.	COLOUR	EAN	
A-1044560	Black	* 735671	



ADJUSTABLE WOODEN GATE

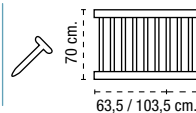
- Stretching wooden safety gate. 70 cm height.
- From 63.5 to 103.5 cm long.
- It may be used to prevent access to stairs or at doorways.
- Easy to install.
- Wide walk through section.
- Complies with EN 1930:2011 standard.
- Assembly elements included.
- Assembly instructions included.

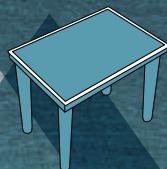
EAN13 code

8425181 *



REF.	COLOUR	EAN	
A-1044550	Wood	* 735664	





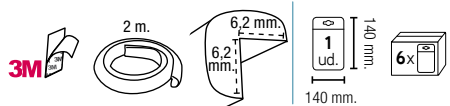
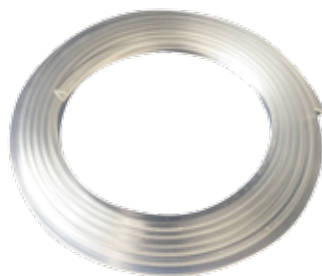
To protect and minimize damage in case of falling or accidentally hitting edges or corners.

TRANSPARENT PROTECTIVE PROFILE

- It can be combined with corner guards A-1044030.
- Perfect for glass tables.
- Length: 2 m.
- Material: PVC

EAN13 code **8425181** *

REF.	COLOUR	EAN
A-1044410	Transparent	* 735688



PROTECTIVE PROFILE ROLL

- Heavy padding.
- It can be combined with corner guards A-1044261 and A-1044262.
- Length: 1 m.

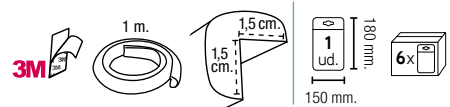
EAN13 code **8425181** *

REF.	COLOUR	EAN
A-1044192	Brown	* 735855
A-1044193	Grey	* 735862



BROWN
A-1044192

GREY
A-1044193



PROTECTIVE PROFILE ROLL + 4 CORNER GUARDS PACK

- Heavy padding.
- Profile roll length: 2 m.

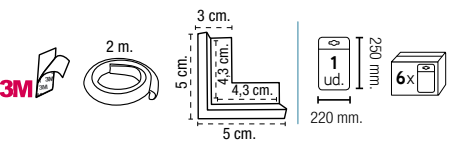
EAN13 code **8425181** *

REF.	COLOUR	EAN
A-1044195	White	* 735695
A-1044196	Dark brown	* 735701



WHITE
A-1044195

DARK BROWN
A-1044196



MULTI-PURPOSE PROTECTIVE PROFILE

- Heavy padding.
- 8 cm height to adjust to any table.
- It can be combined with corner guards A-1044250 and A-1044260.
- Length: 1 m.

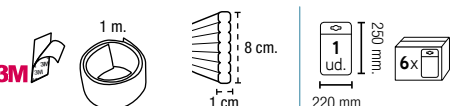
EAN13 code **8425181** *

REF.	COLOUR	EAN
A-1044420	White	* 735718
A-1044421	Dark brown	* 735725



WHITE
A-1044420

DARK BROWN
A-1044421



CHILD SAFETY ELECTRIC OUTLETS AND CORDS SAFETY



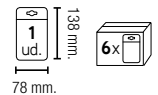
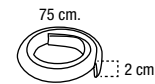
www.arregui.biz

VELCRO CORD FASTENER

- Dimensions: 75 cm x 2 cm.
- It can be cut down to the desired length.

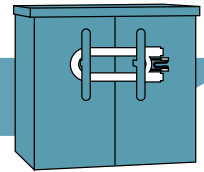
EAN13 code **8425181** *

REF.	COLOUR	EAN
A-1044430	White	* 735558



CABINET LOCKS

To prevent children from opening cabinets and pull out or break their contents.

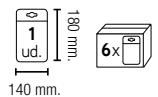
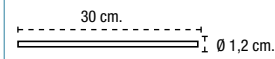


MULTI-PURPOSE FLEXIBLE LOCK

- Length: 30 cm
- Aluminium interior coated with PVC and NBR rubber ends.

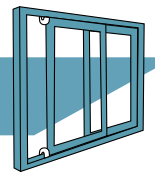
EAN13 code **8425181** *

REF.	COLOUR	EAN
A-1044440	Black	* 735565



WINDOW SAFETY

To prevent children from opening windows and throwing out any objects or falling out of a window.

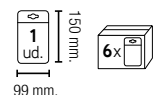


WINDOW OPENING LIMITER

- Valid for turning, tilting, horizontal sliding or vertical sliding windows.
- It allows 10 cm maximum opening.
- It includes 4 screws for wood.
- Assembly instructions included.

EAN13 code **8425181** *

REF.	COLOUR	EAN
A-1044450	White	* 735572





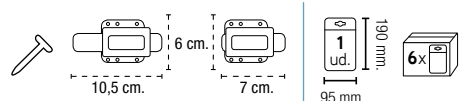
To prevent children from getting their fingers pinched.

DOOR SLAM STOP

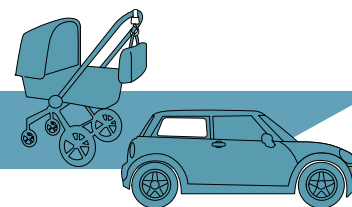
- This device prevents doors from shutting at speed and with force. It allows you to close the door when pulling firmly from the door handle.
- It includes 6 screws for wood.

EAN13 code **8425181** *

REF.	COLOUR	EAN
A-1044460	White	* 735589



CAR AND OUTDOOR SAFETY



PUSHCHAIR SHOPPING BAG HOOK

- Unlocking: 3-digit security code. Resettable code.
- It can hold bags up to 3 kilograms.

EAN13 code **8425181** *

REF.	COLOUR	EAN
A-1044510	Orange	* 735633

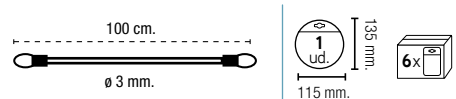
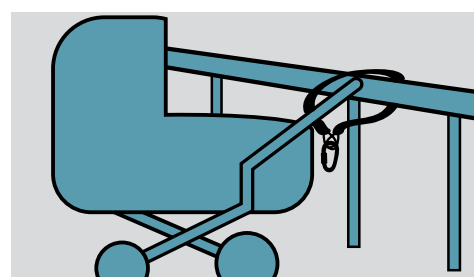


PUSHCHAIR SECURITY WIRE

- Ideal to lock pushchairs or prams on to posts, railings, etc.
- PVC coated steel.
- It is to be used together with a lock. Recommended to be used with hook ref. A-1044510.

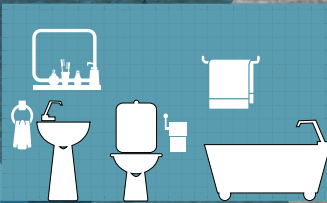
EAN13 code **8425181** *

REF.	EAN
A-1044520	* 735640



CHILD SAFETY BATHROOM SAFETY

Keep safe from slips and falls at the bathroom.



www.arregui.biz

MULTI-PURPOSE FOLDABLE STOOL

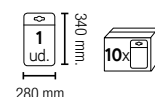
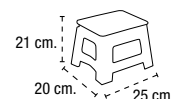
- Highly resistant polypropylene.
- Non-slip surface.
- Foldable.
- Convenient transport handle.

EAN13 code **8425181** *

REF.	MODEL	EAN
A-1044470	Elephant	* 735596



Available in an attractive 10-unit display.

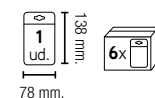
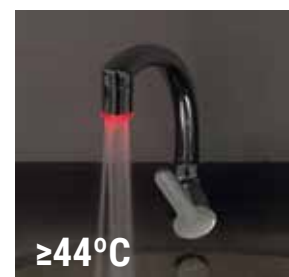


TAP FAUCET WITH TEMPERATURE SENSITIVE COLOUR LED

- Valid for basin and kitchen sink taps. Inner and outer assembly thread. With adaptor.
- The colour of the LED light changes according to water temperature to avoid getting scalded:
 - $\leq 31^{\circ}\text{C}$: Green colour
 - $32^{\circ}\text{C}-43^{\circ}\text{C}$: Blue colour
 - $\geq 44^{\circ}\text{C}$: Red colour

EAN13 code **8425181** *

REF.	EAN
A-1044480	* 735602

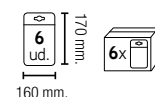
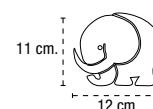
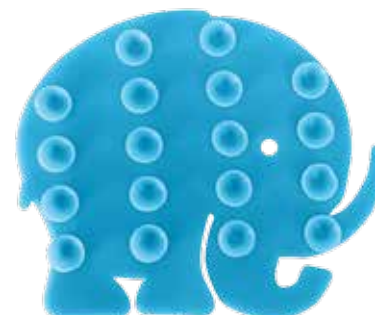
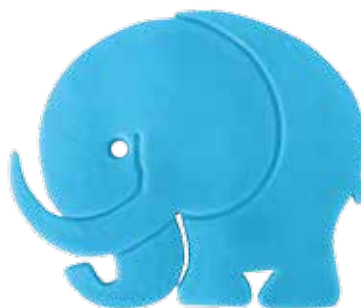


BATH TAB NON-SLIP MAT WITH SUCTION PADS

- To protect children from slips and falls while having a bath.
- With suction pads.
- Material: Silicone.

EAN13 code **8425181** *

REF.	MODEL	EAN
A-1044490	Elephant	* 735619





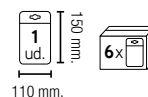
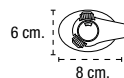
To prevent gas leaks, burns or other serious hazards.

KITCHEN OVEN SAFETY LOCK

- To prevent the oven door from opening.
- Easy assembly with heat resistant adhesive.
- Also valid for microwave, dishwasher...

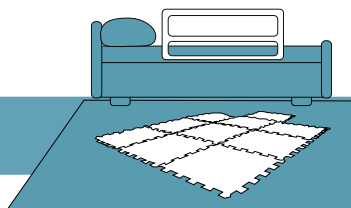
EAN13 code

8425181 * *



REF.	COLOUR	EAN
A-1044530	White	* 735657

BEDROOM SAFETY



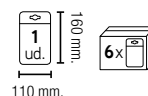
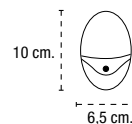
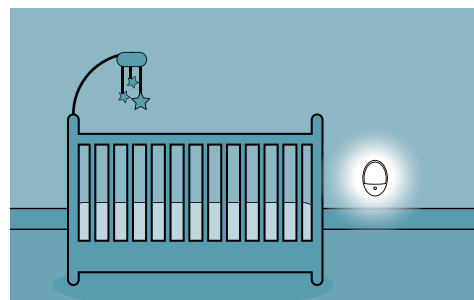
BABY NIGHT LIGHT

CE

- Light sensor: the light turns on when the room light is low.
- AC110V/240V
- 1 W
- Consumption: 0,6 kWh/1000 h.
- Complies with EN60598 standard for lamps.

EAN13 code

8425181 * *



REF.	COLOUR	EAN
A-1044540	White	* 735732



BINARY

TECHNICAL SPECIFICATION

Material:	Stainless steel and polypropylene.
Use:	erves for selective collection of domestic waste.
Capacity:	Available with 2 compartments of 18 and 16 litres, with removable plastic buckets and hadles to facilitate removing and cleaning.
Opening system:	Upper bucket: through button Lower bucket: through pedal
EAN13 code	8425181 *



Ref.
CR705-34L

Reference	CR705-34L
Exterior measurements (HxWxD)	770x325x325 mm.
Weight	5,4 kg.
Volume	34 L.
EAN13 code	* 735909
Packaging measurements (HxWxD)	780x345x325 mm.



Upper bucket: through button



Lower bucket: through pedal

ARREGUI SPAIN:

Polígono Ind. Ubegun 3B
20810 Orío (Guipúzcoa)
+34 943 833 700
+34 943 834 556
arregui@arregui.es



ARREGUI DOMUS:

Via M.S. Ottone 1
42041 Brescello (RE)
+05 221 520 048
+05 221 520 050
arregui@arregui.it

ARREGUI TAIWAN:

Nan Fu Str 159-3
Luzhu Taoyuan